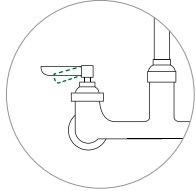


How to install an efficient pre-rinse spray valve.

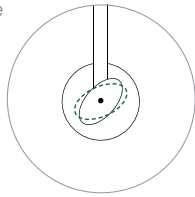
1

Shut off the water

Turn off the water leading to the hose.

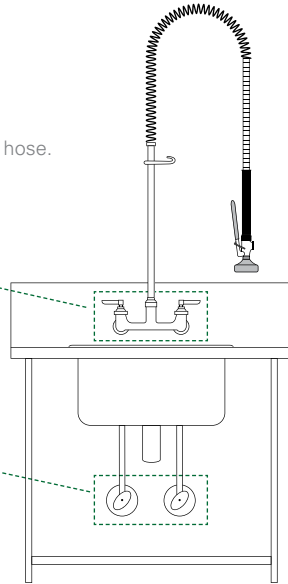


Sometimes the shut off point is above the counter here.



OFF

Other times you have to look under the sink and find the water shut off under the sink.

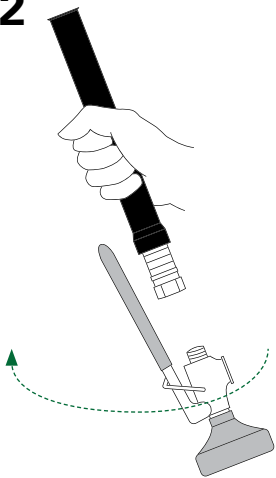


2

Remove the old spray valve

Remove the old spray valve by twisting off the valve.

Turn left to loosen, or counter clockwise.



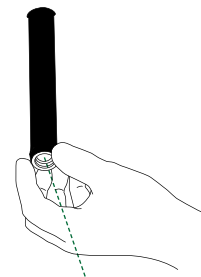
"LEFTY LOOSY"

3

Check the washer condition

Look inside the hose, or on your old spray valve to locate the washer.

Inspect the washer and replace it if it looks like it's in poor condition.

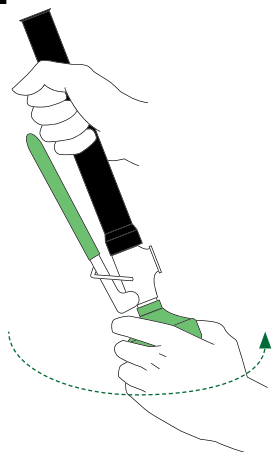


4

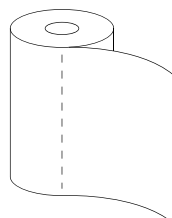
Secure the new spray valve

Double check that the washer is in place.

Tighten on the new spray valve by hand. If it's slippery, use a paper towel to prevent your hand from slipping.

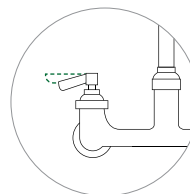


"RIGHTY TIGHTY"

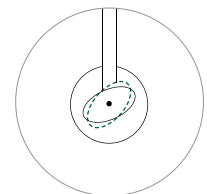


5

Turn the water back on and check for leaks



ON



Watch the instructional video at www.png.ca/commercial-programs/efficient-kitchens

Call us toll free at 1 800 667 2297

Or email us at savingenergy@png.ca

PNG Pacific Northern Gas Ltd.